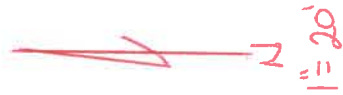
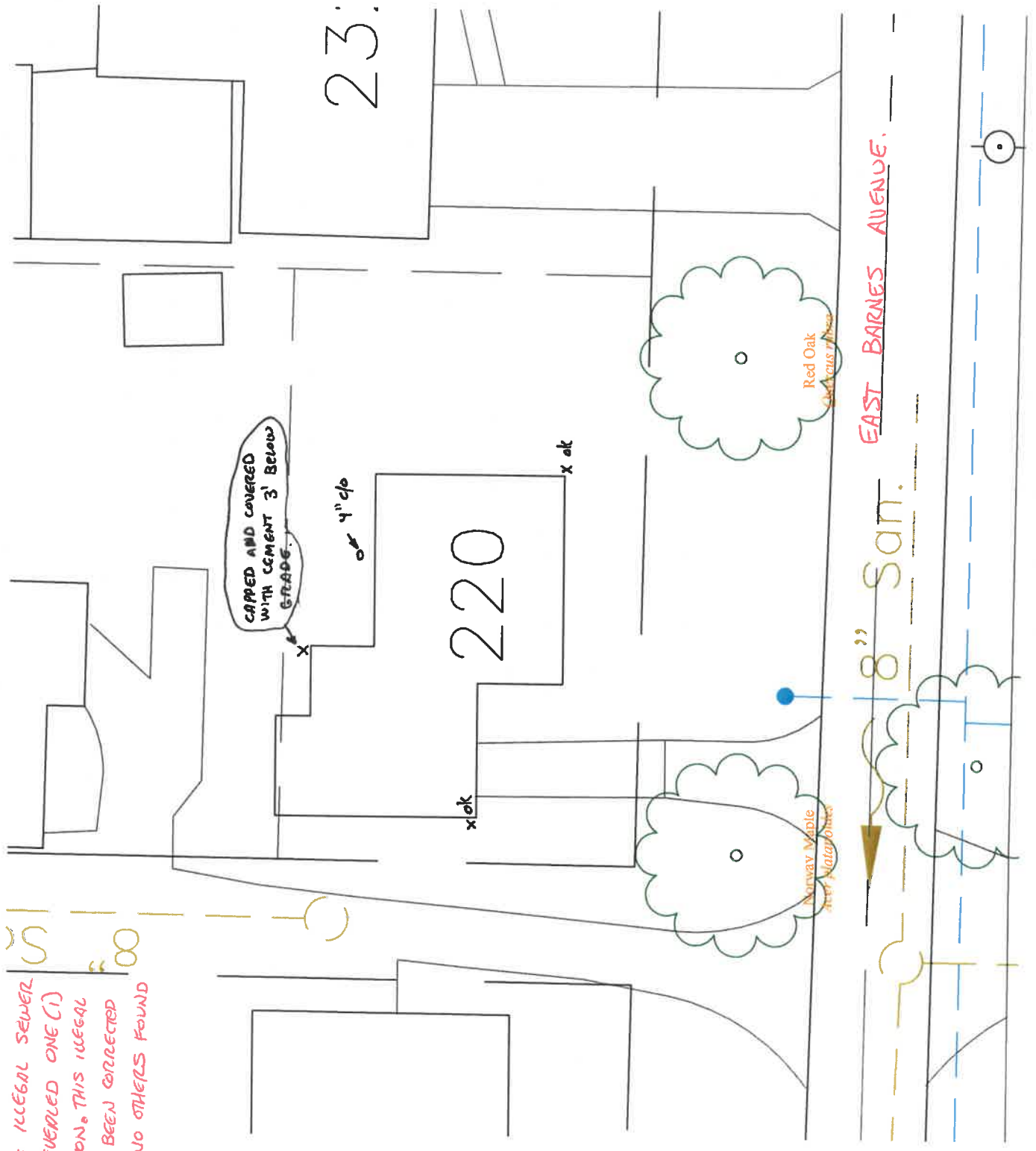


220 EAST BARNES AVENUE

DATE: 4-22-15
 INSPECTED BY: MARY CROSSLAND
 INVESTIGATION OF ILLEGAL SEWER CONNECTIONS REVEALED ONE (1) ILLEGAL CONNECTION. THIS ILLEGAL CONNECTION HAS BEEN CORRECTED AND THERE ARE NO OTHERS FOUND AT THIS TIME.



EAST BARNES AVENUE.

8" San.